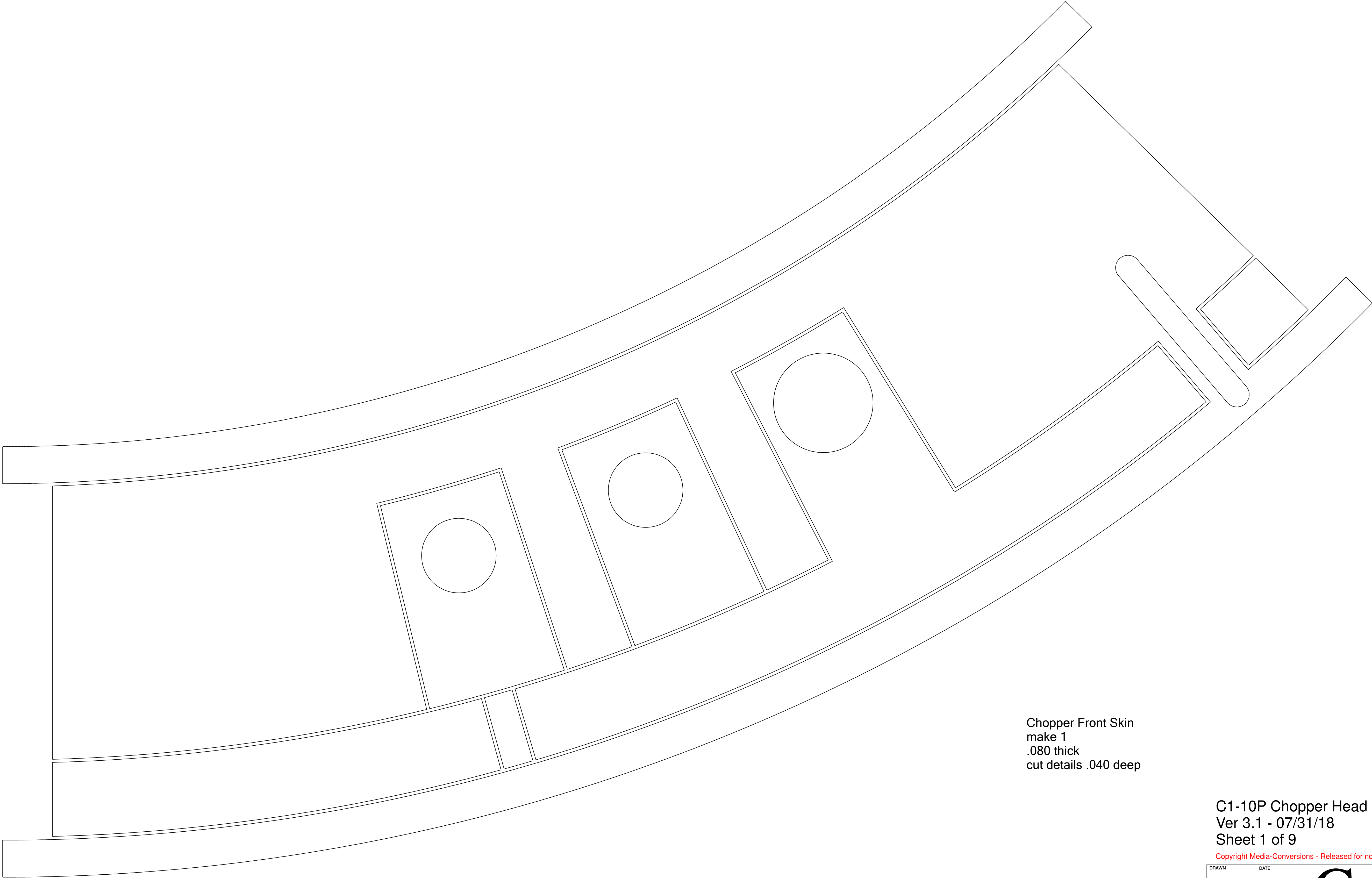


1" x 1"  
square

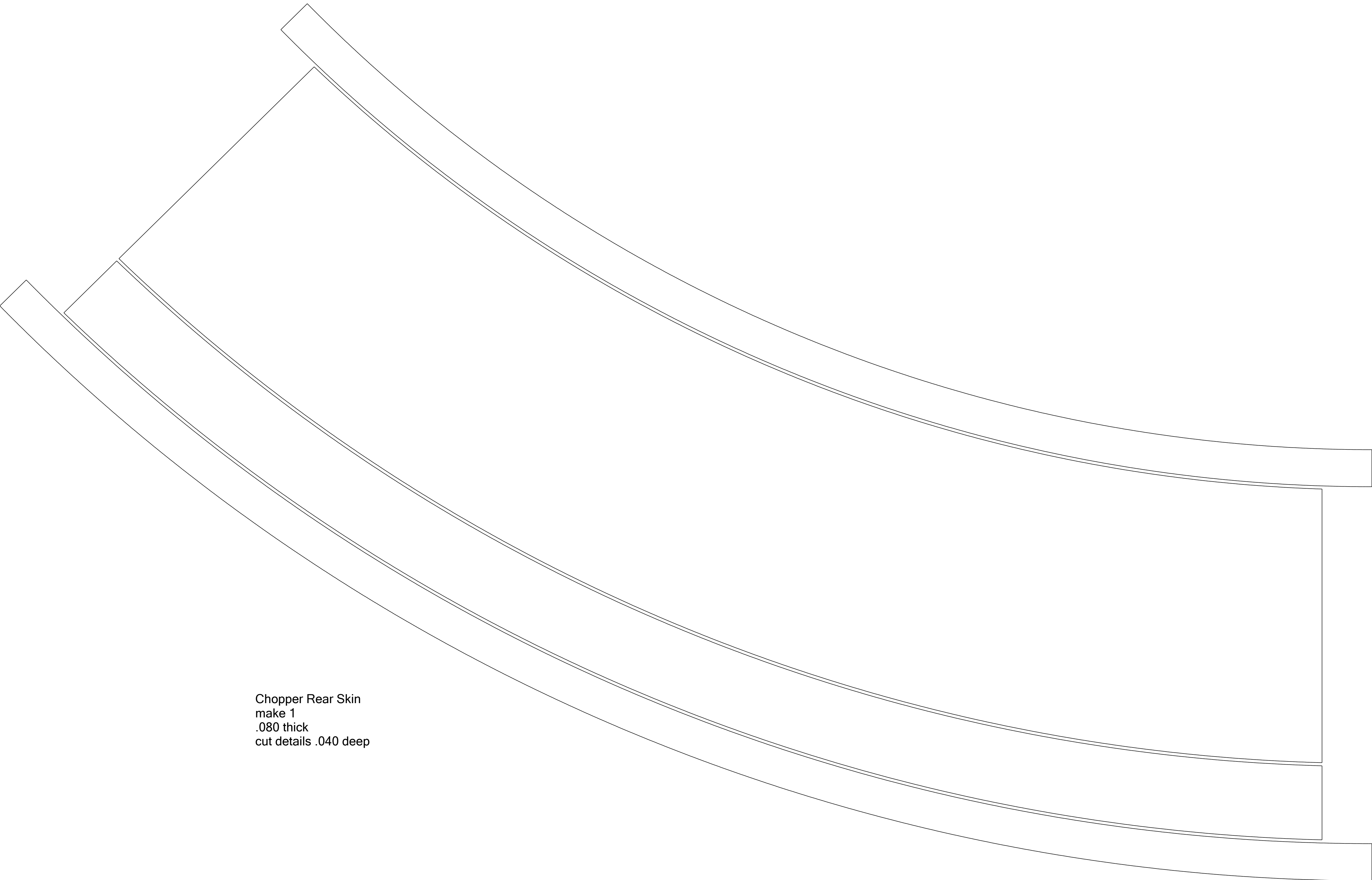


Chopper Front Skin  
make 1  
.080 thick  
cut details .040 deep

C1-10P Chopper Head Design  
Ver 3.1 - 07/31/18  
Sheet 1 of 9

Copyright Media-Conversions - Released for non-commercial use ONLY!

DRAWN	DATE	<div>MediaConversions</div>			
CHECKED					
QA					
MFG					
APPROVED		SIZE C	FSCM NO.	DWG NO.	REV
SCALE		SHEET			



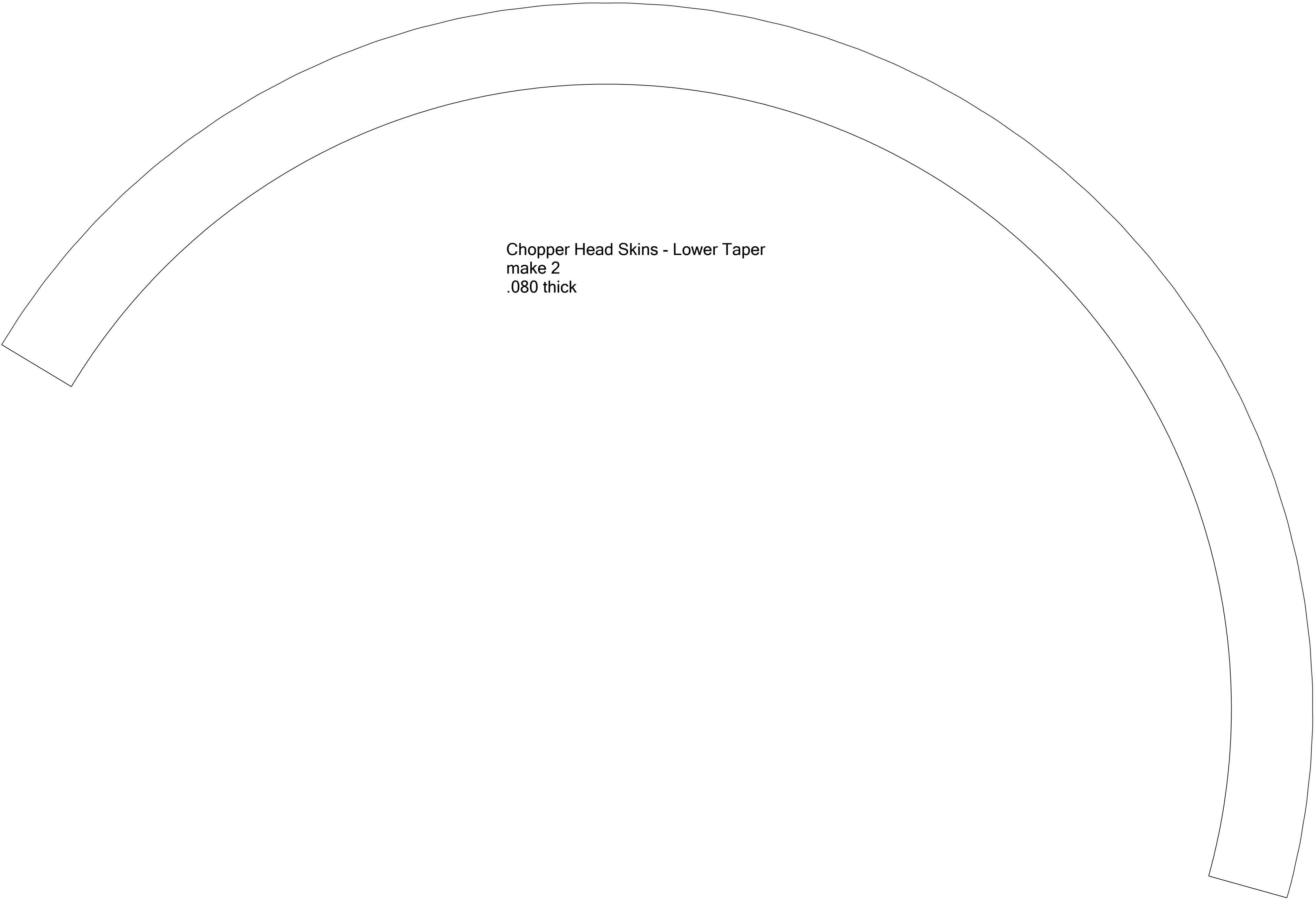
Chopper Rear Skin  
make 1  
.080 thick  
cut details .040 deep

1" x 1"  
square

C1-10P Chopper Head Design  
Ver 3.1 - 07/31/18  
Sheet 2 of 9

Copyright Media-Conversions - Released for non-commercial use ONLY!

DRAWN	DATE	<div><div>C</div><div>Media Conversions</div></div>			
CHECKED					
QA					
MFG					
APPROVED		SIZE C	FSCM NO.	DWG NO.	REV
SCALE		SHEET			



Chopper Head Skins - Lower Taper  
make 2  
.080 thick

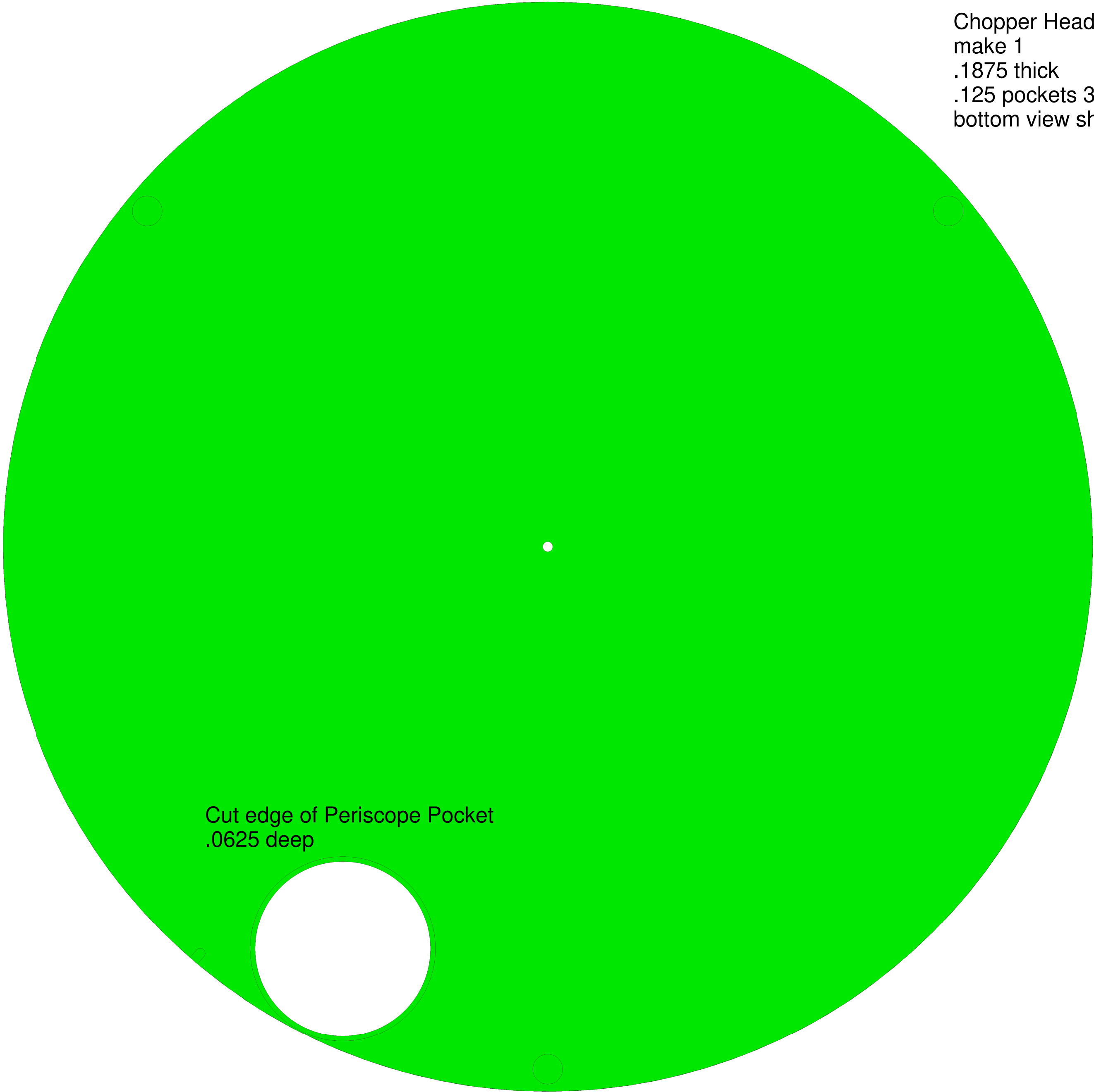
Chopper Head Skins - Bearing Skin  
make 2  
.080 thick



C1-10P Chopper Head Design  
Ver 3.1 - 07/31/18  
Sheet 3 of 9

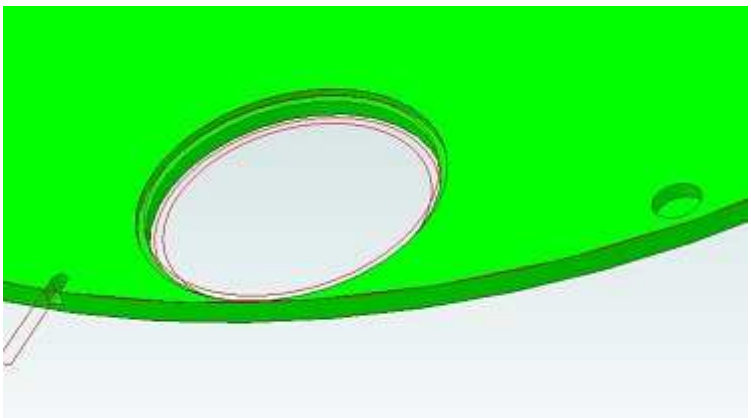
Copyright Media-Conversions - Released for non-commercial use ONLY!

DRAWN	DATE	<div>MediaConversions</div>			
CHECKED					
QA					
MFG		SIZE C	FSCM NO.	DWG NO.	REV
APPROVED		SCALE		SHEET	



Chopper Head Top Inner  
make 1  
.1875 thick  
.125 pockets 3 places  
bottom view shown

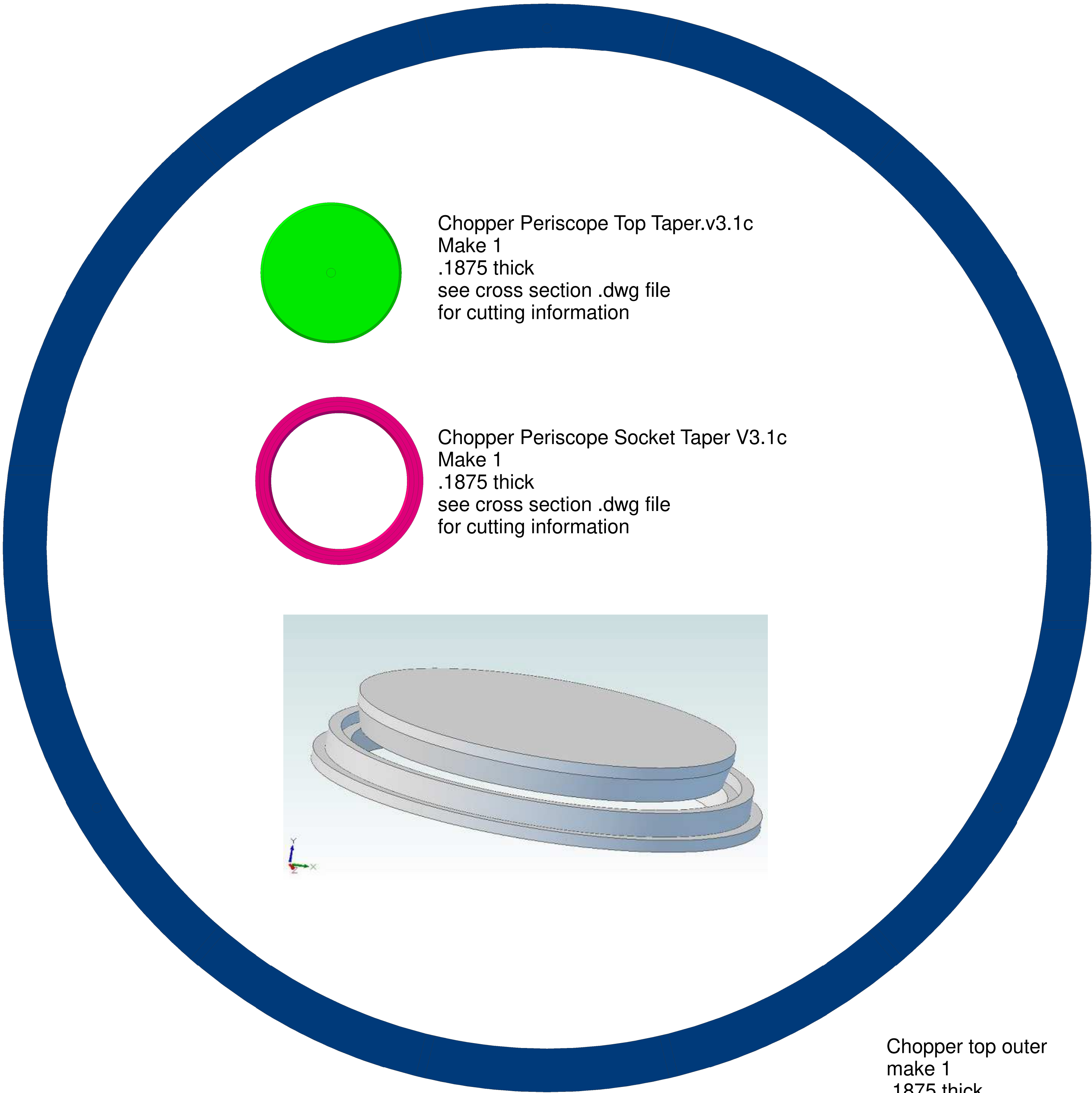
Cut edge of Periscope Pocket  
.0625 deep



detail view of  
Periscope Pocket

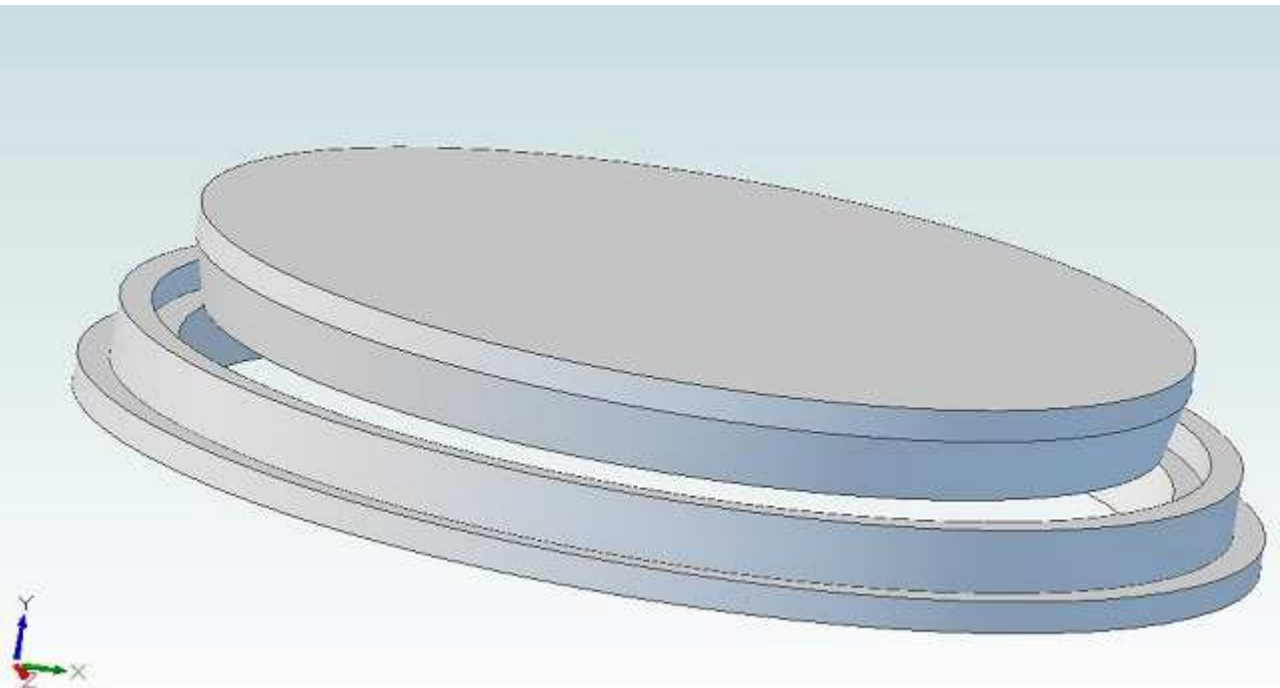
3 small pockets on Head Top Inner & Head Top Magnets  
are intended for 3/8 dia, 1/8 thick magnets  
for example K&J Magnetics D62-N52  
[www.kjmagnetics.com](http://www.kjmagnetics.com)

1" x 1"  
square



Chopper Periscope Top Taper.v3.1c  
Make 1  
.1875 thick  
see cross section .dwg file  
for cutting information

Chopper Periscope Socket Taper V3.1c  
Make 1  
.1875 thick  
see cross section .dwg file  
for cutting information



Chopper top outer  
make 1  
.1875 thick  
cut details .125 deep

C1-10P Chopper Head Design  
Ver 3.1 - 07/31/18  
Sheet 4 of 9

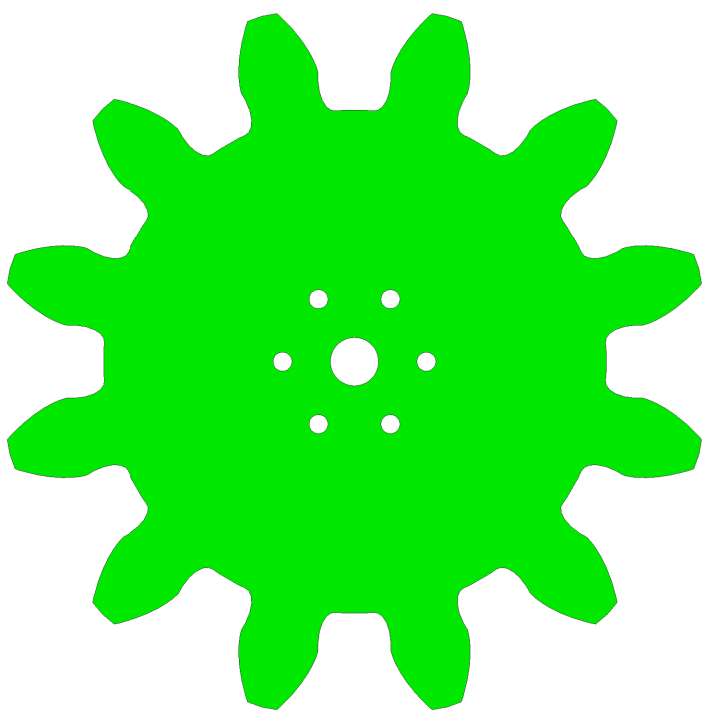
Copyright Media-Conversions - Released for non-commercial use ONLY!

DRAWN	DATE	<div>MediaConversions</div>			
CHECKED					
QA					
MFG					
APPROVED		SIZE C	FSCM NO.	DWG NO.	REV
SCALE				SHEET	



Chopper Head Bottom Indx  
make 1  
.1875 thick

Gear Design Software on-line. Go to <http://www.hessmer.org/blog/>  
which points to: Online Involute Spur Gear Builder Part 1  
<http://hessmer.org/gears/InvoluteSpurGearBuilder.html>



Chopper Spur Gear  
make 1  
,1875 thick

I used a pololu 6mm hub to mount the  
Dome Motivator spur gear - part #1083  
[www.pololu.com](http://www.pololu.com)

Mounting holes (6) for VXB 392mm (15.44") Lazy Susan Bearing  
Product Code: KIT11281 - see VXB.com  
See assembly instructions for discussion of mounting issues

Deeper Rib Slot for Index Rib

Lower hole is front of droid marker

1" x 1"  
square

C1-10P Chopper Head Design  
Ver 3.1 - 07/31/18  
Sheet 5 of 9

Copyright Media-Conversions - Released for non-commercial use ONLY!

DRAWN	DATE	<div>MediaConversions</div>			
CHECKED					
QA					
MFG					
APPROVED		SIZE C	FSOM NO.	DWG NO.	REV
SCALE		SHEET			

Dome Lens  
Make 1 - .125 thick  
translucent  
colored plastic  
cut profile .080 deep

Chopper Shelf Ring  
make 1  
.125 thick  
[note this is bottom view]  
chamfer edge 30 degrees

This "bulge" in the shelf is to  
support a periscope lifter  
It will be on the front right of the  
droid when this ring is turned over.

Hole (above) is front of droid marker

Deeper Rib Slot for Index Rib

Arm Box front edge  
make 4  
.125 thick

Arm Box lower back  
make 2  
.125 thick

Arm Box rear edge  
make 4  
.125 thick

Head Rib  
make 7  
.125 thick

Head Rib Index  
make 1  
.125 thick  
note the bottom tab is longer  
will only fit index slot

Arm Box upper back  
make 2  
.125 thick

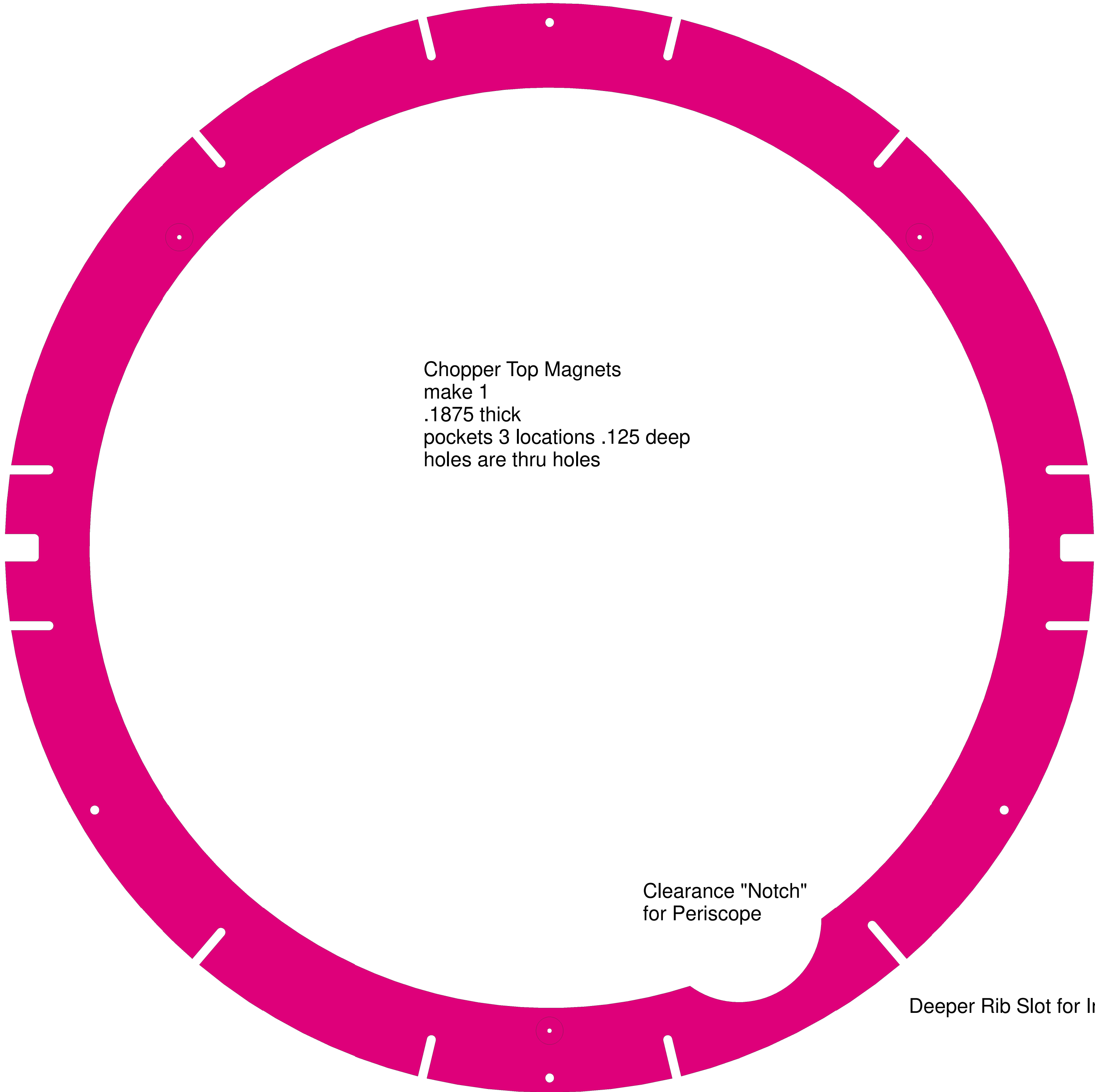
Arm Box Rib  
make 4  
.125 thick

1" x 1"  
square

C1-10P Chopper Head Design  
Ver 3.1 - 07/31/18  
Sheet 6 of 9

Copyright Media-Conversions - Released for non-commercial use ONLY!

DRAWN	DATE	<div>MediaConversions</div>			
CHECKED					
QA					
MFG					
APPROVED					
SCALE				SHEET	



Chopper Top Magnets  
make 1  
.1875 thick  
pockets 3 locations .125 deep  
holes are thru holes

Clearance "Notch"  
for Periscope

Deeper Rib Slot for Index Rib

Hole (above) is front of droid marker

pockets on Head Top Inner & Head Top Magnets  
are intended for 3/8 dia, 1/8 thick magnets  
for example K&J Magnetics D62-N52  
[www.kjmagnetics.com](http://www.kjmagnetics.com)



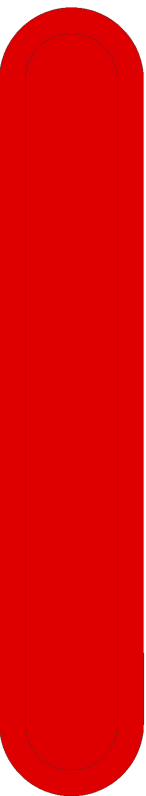
Arm Box Skin Attach Upper  
make 4  
.1875 thick



Arm Box Skin Attach Lower  
make 4  
.1875 thick

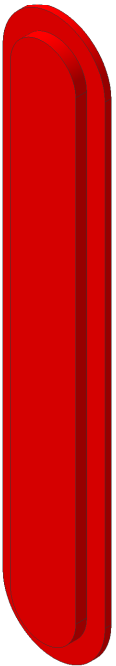


Lower Skin Attach  
make 4  
.1875 thick



Chopper Head Lens Red V3  
Use- .125 thick RED plastic  
Red Plexiglass Acrylic Sheet - #2283 and  
Transparent Red Plexiglass Acrylic Sheet - #2423  
with 3M 30% diffusion Layer attached to rear surface

cut pocket .080 deep



Front  
Surface

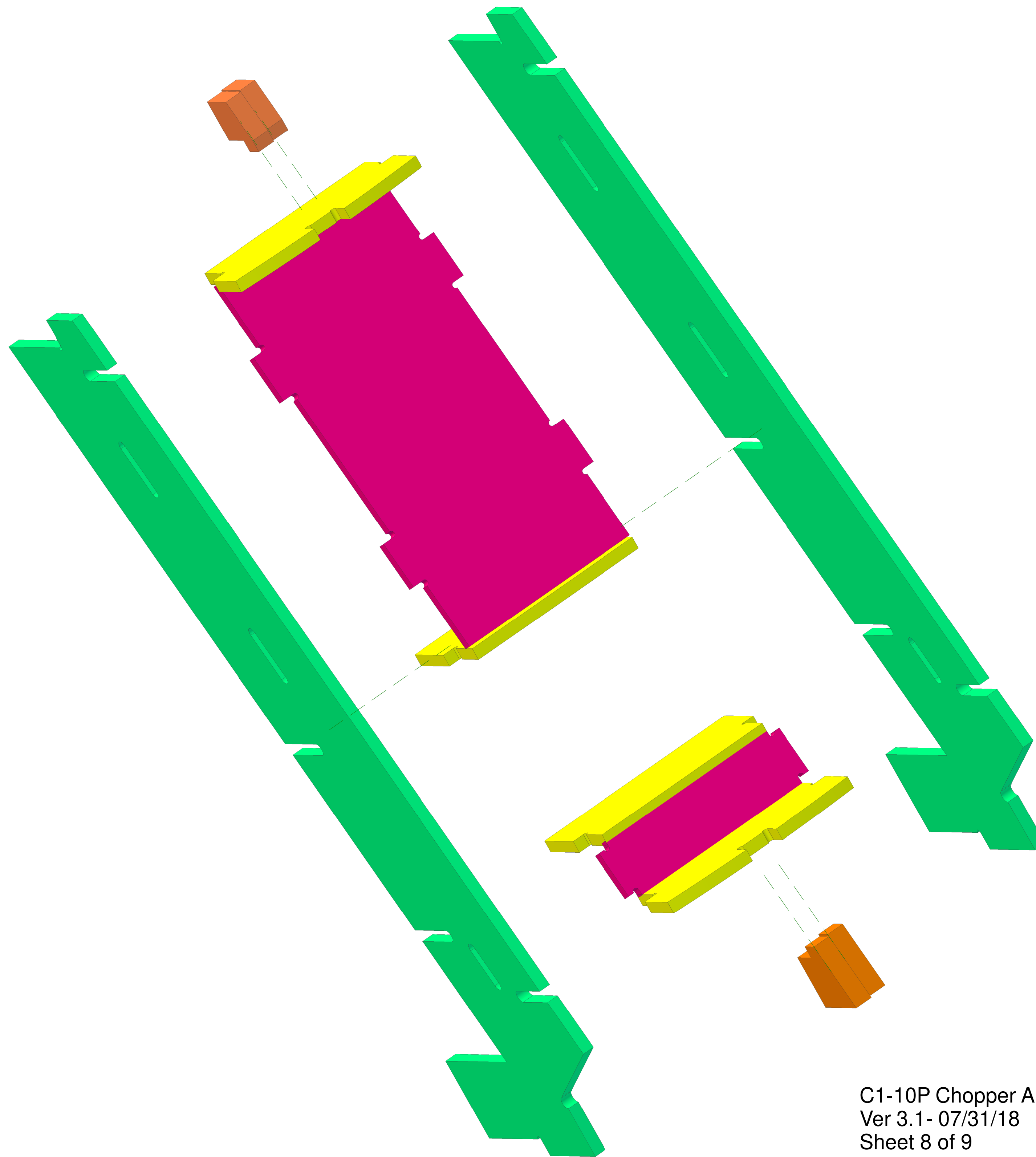
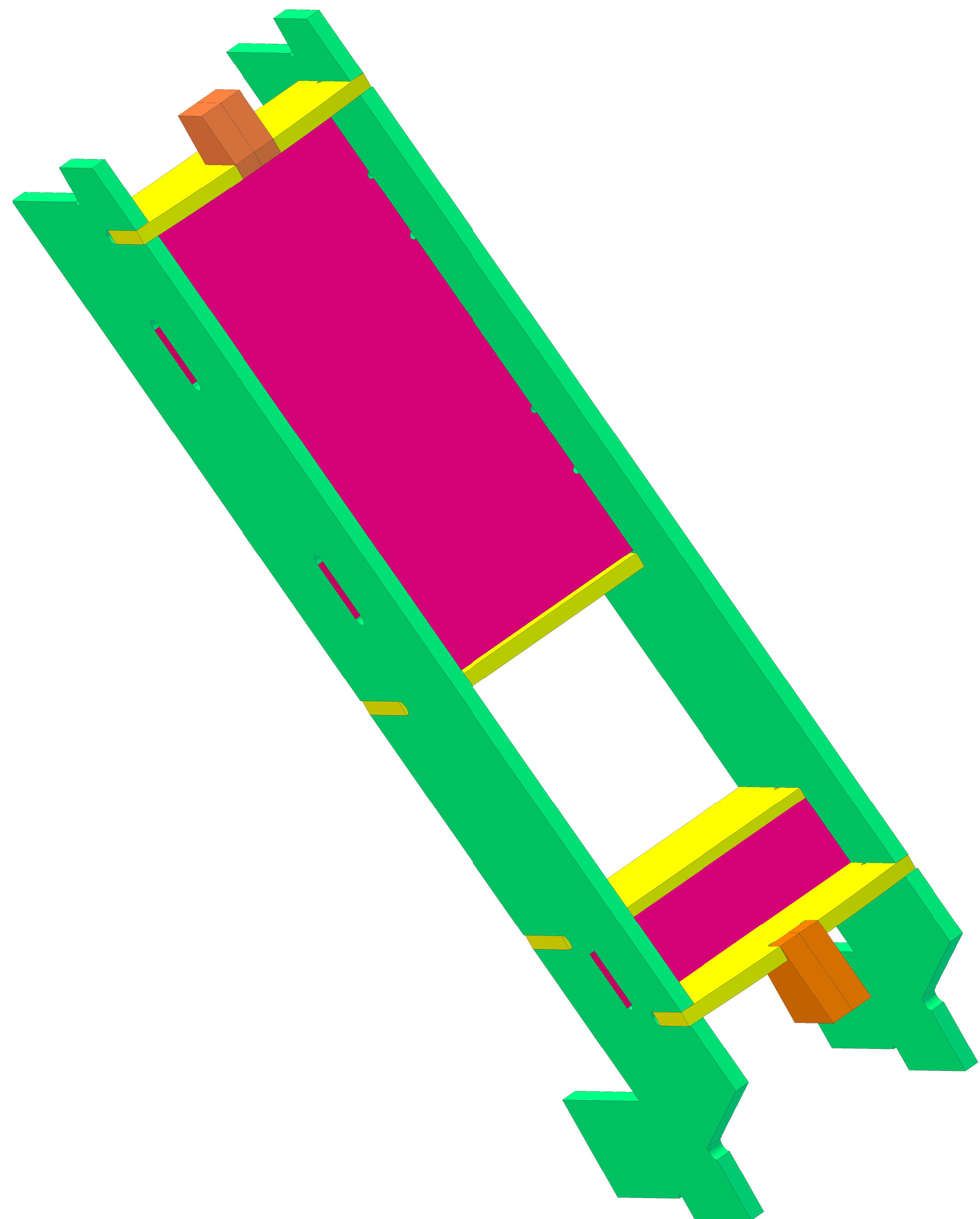
Rear  
Surface  
Apply Diffuser to this side

1" x 1"  
square

C1-10P Chopper Head Design  
Ver 3.1- 07/31/18  
Sheet 7 of 9

Copyright Media-Conversions - Released for non-commercial use ONLY!

DRAWN	DATE	<div>MediaConversions</div>			
CHECKED					
QA					
MFG		SIZE C	FSOM NO.	DWG NO.	REV
APPROVED		SCALE		SHEET	



Arm Box Exploded Views  
also see 3D .pdf file in assembly drawings

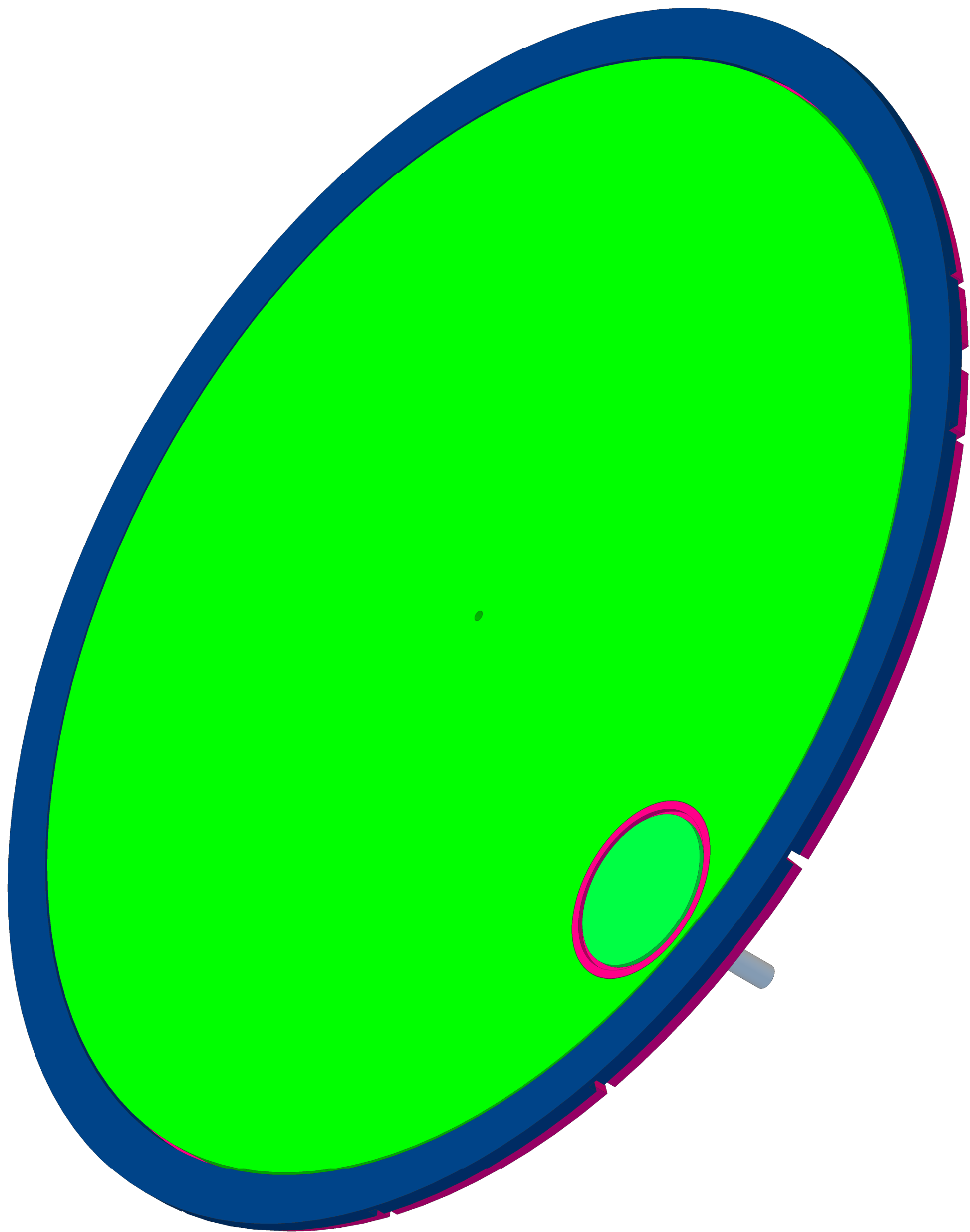
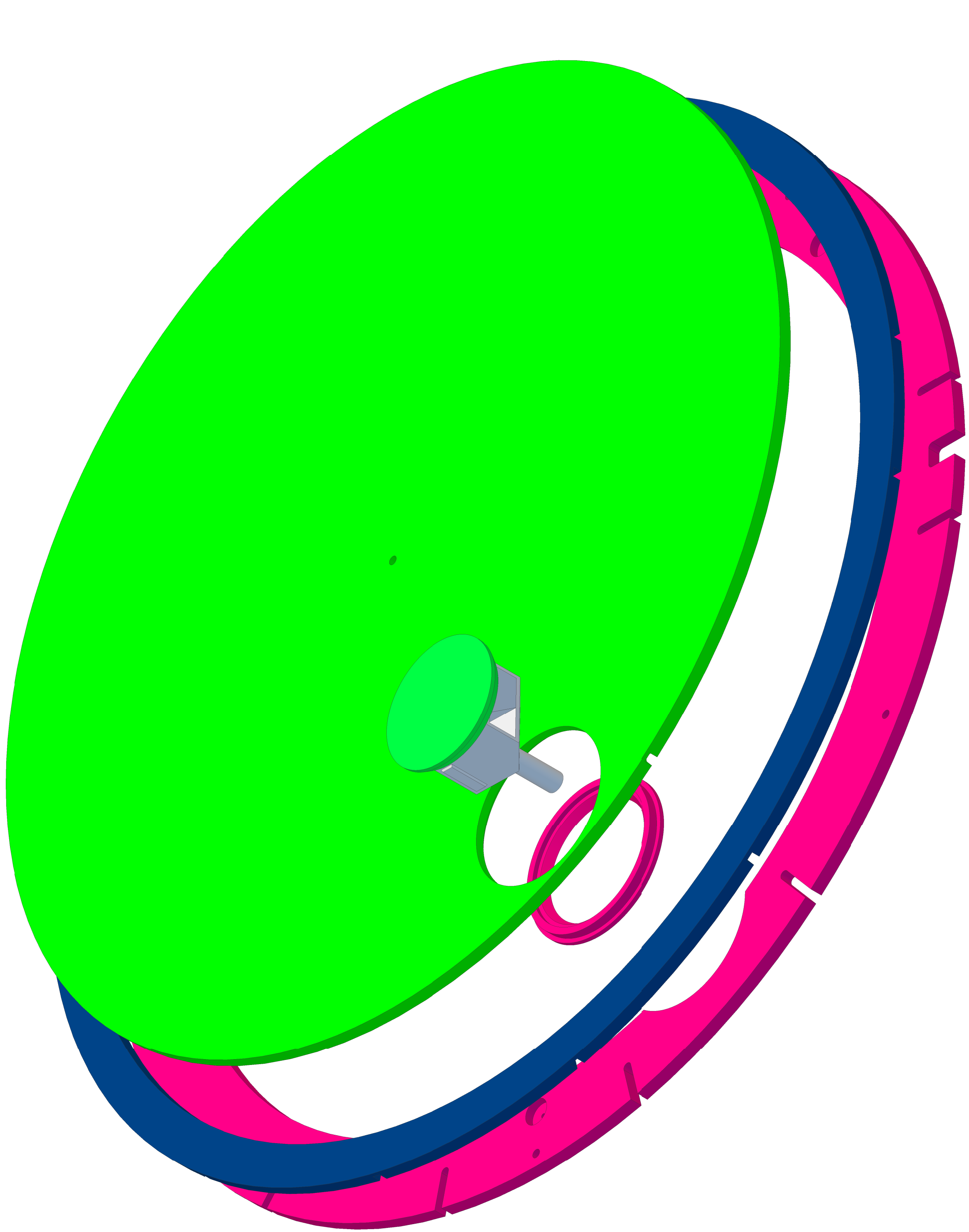
C1-10P Chopper Arm Box Assembly  
Ver 3.1- 07/31/18  
Sheet 8 of 9

Copyright Media-Conversions - Released for non-commercial use ONLY!

1" x 1"  
square

DRAWN	DATE	<div>MediaConversions</div>			
CHECKED					
QA					
MFG					
APPROVED		SIZE C	FSOM NO.	DWG NO.	REV
SCALE				SHEET	





1" x 1"  
square

C1-10P Chopper Head Top Assembly  
Ver 3.1- 07/31/18  
Sheet 9 of 9

Copyright Media-Conversions - Released for non-commercial use ONLY!

DRAWN	DATE	<div><div>C</div>Media Conversions</div>			
CHECKED					
QA					
MFG		SIZE C	FSCM NO.	DWG NO.	REV
APPROVED		SCALE		SHEET	