



Battery Box Side Hole Xtd - Make 1 .1875 thick. Edge & Magnet pockets are .125 deep



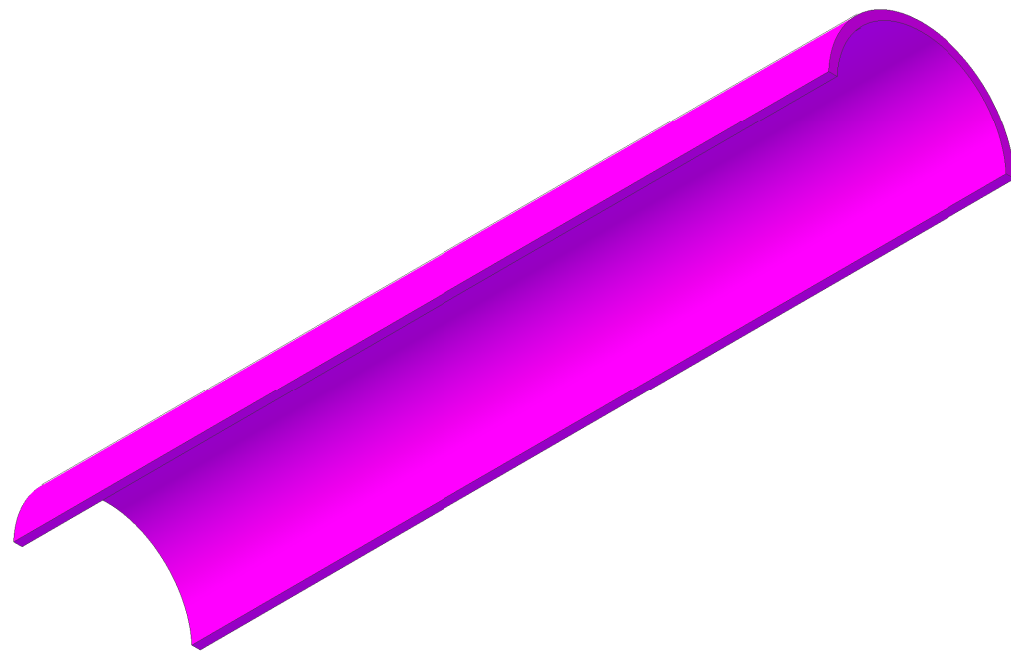
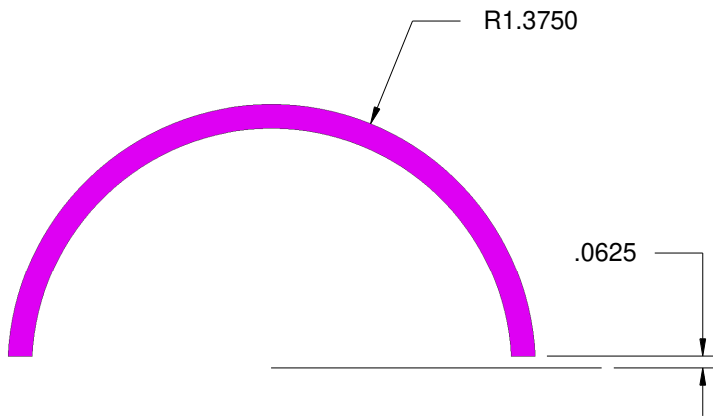
Battery Box Side Hole Xtd Mirror - Make 1 .1875 thick. Edge & Magnet pockets are .125 deep

pockets on Battery Box Side Hole & Side Hole Mirror
are intended for 3/8 dia, 1/8 thick magnets
for example K&J Magnetics D62-N52
www.kjmagnetics.com

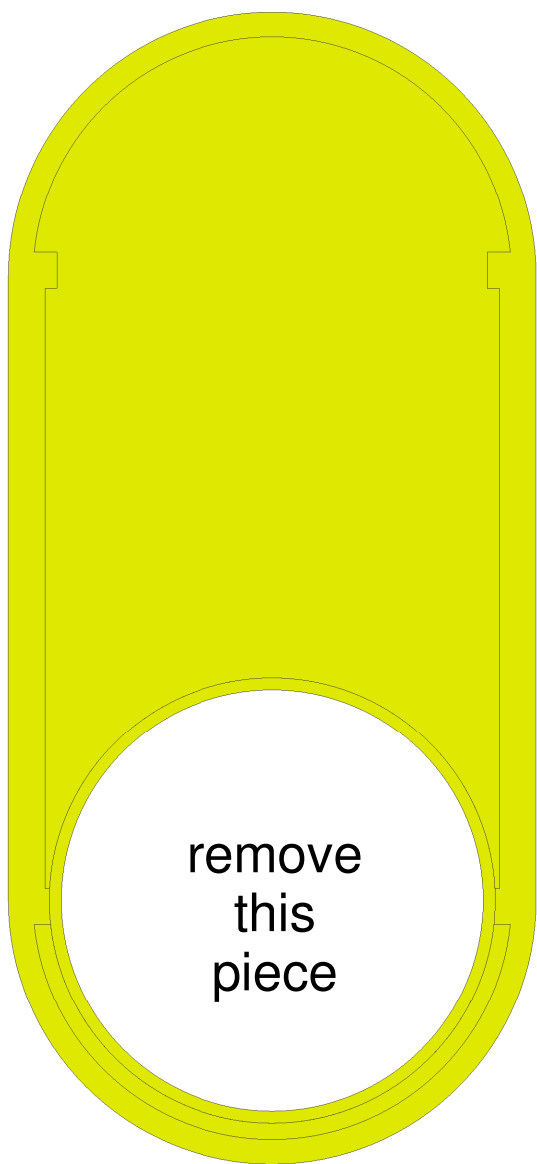


Battery Box Side Xtd - Make 2 .1875 thick. Edge pockets are .125 deep

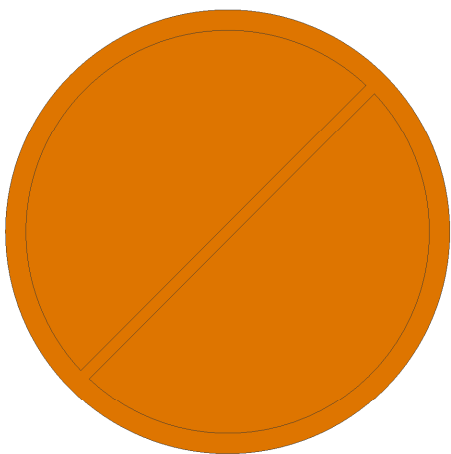
1" x 1"
square



Bat Box Curved End - Make 2
Made from 2.75in OD, 2.5in ID Acrylic tubing 12 in long
Cut lengthwise using .125 OD milling cutter.
Battery Box side panels have been extended to
compensate for the .0625 reduction in height of the end.



Battery Box End Mod - Make 4 .1875 thick.
Edge pocket .125 deep
Internal pocket .0624 deep



Battery Box Plug - make 4 .1875 thick
Pockets .125 deep

Chopper Battery Box
Version 4.0

Copyright Media-Conversions - Released for non-commercial use ONLY!

DRAWN	DATE 09/16/18	<div>Media-Conversions</div>		
CHECKED				
QA				
MFG				
APPROVED		SIZE C	FSCM NO.	DWG NO. Sheet 1 of 1
		SCALE		REV
				SHEET